



TIHEI TĀKITIMU

IWI MĀORI PARTNERSHIP BOARD

PROGRESS/PRIORITIES REPORT

AGENDA



01. Context



02. Progress



03. Priorities



04. On the radar



05. What's next?

| CONTEXT – OUR PURPOSE

- the needs and aspirations of Māori in relation to hauora Māori outcomes;
- how the health sector is performing in relation to those needs and aspirations;
- the design and delivery of services and public health interventions

| CONTEXT – THE PROGRAMME

1. WHĀNAU VOICE

Engage with whānau and hapū about local health needs and communicate results and insights to HNZ.

2. NEEDS ANALYSIS AND PRIORITY SETTING

Evaluate the current state of hauora Māori to determine priorities for improving hauora Māori.

3. MONITORING

Monitor the local performance of the health system, and report on the activities of HNZ to Māori in our area.

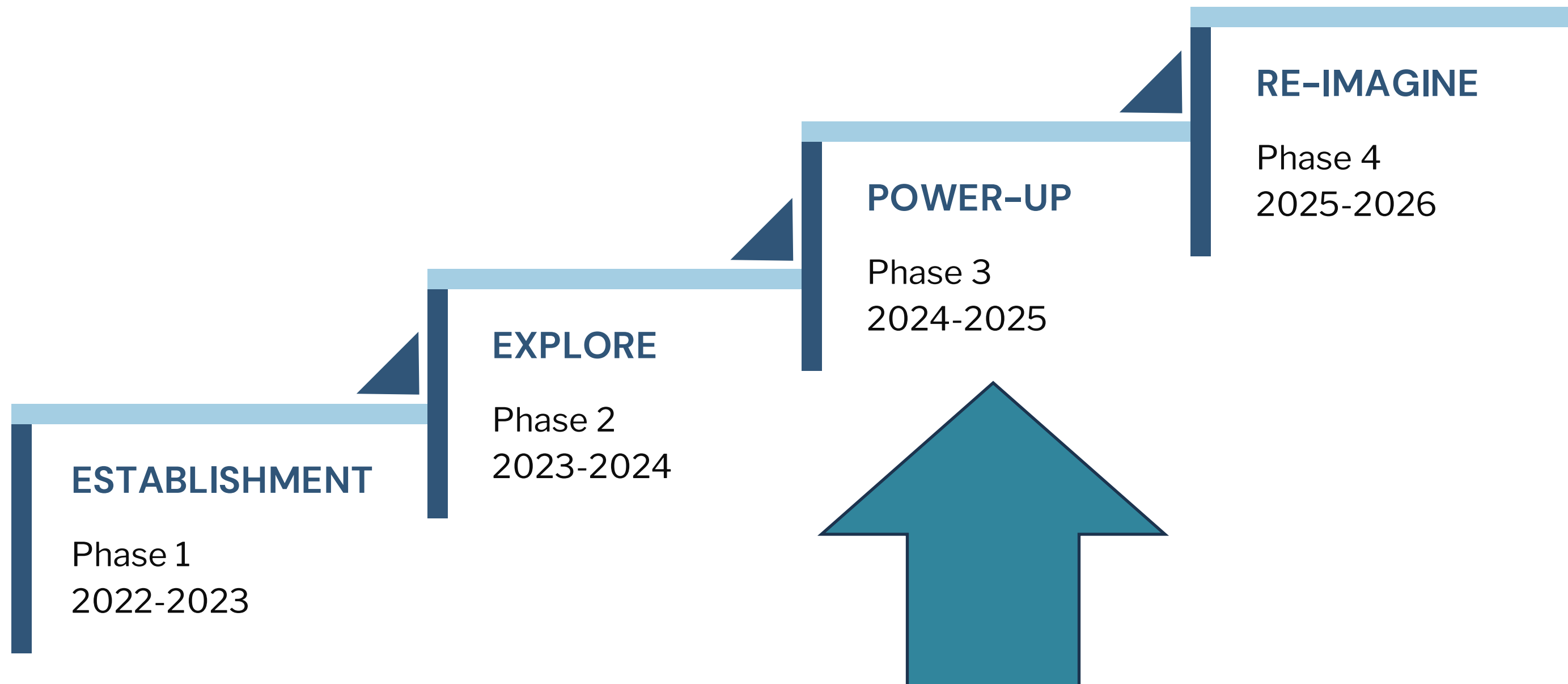
4. INFLUENCE INVESTMENT AND INNOVATION

Engage with HNZ and support its priorities for kaupapa Māori investment and innovation.

5. STRATEGIC COMMISSIONING

Play a key role in local service planning with HNZ and be supported to take on a greater role in strategic commissioning from early 2025.

CONTEXT – TRANSFORMATION



PROGRESS

- Whānau Voice
- Monitoring
- Hauora Māori Priorities
- Community Health Plan AKA Tihei Takitimu Programme Plan

PROGRESS – Whānau Voice



Tūhono

Work with: Mana whenua, Māori organisations, local government

Consider: bias, data sovereignty, communications, koha, AI

PROGRESS – Whānau Voice

Phase 1 | Whānau Voice

Broad and wide

From December 2023 through to February 2024 – kanohi ki te kanohi and online.

Phase 1.5 | Whānau Voice

Targetting specific areas of interest

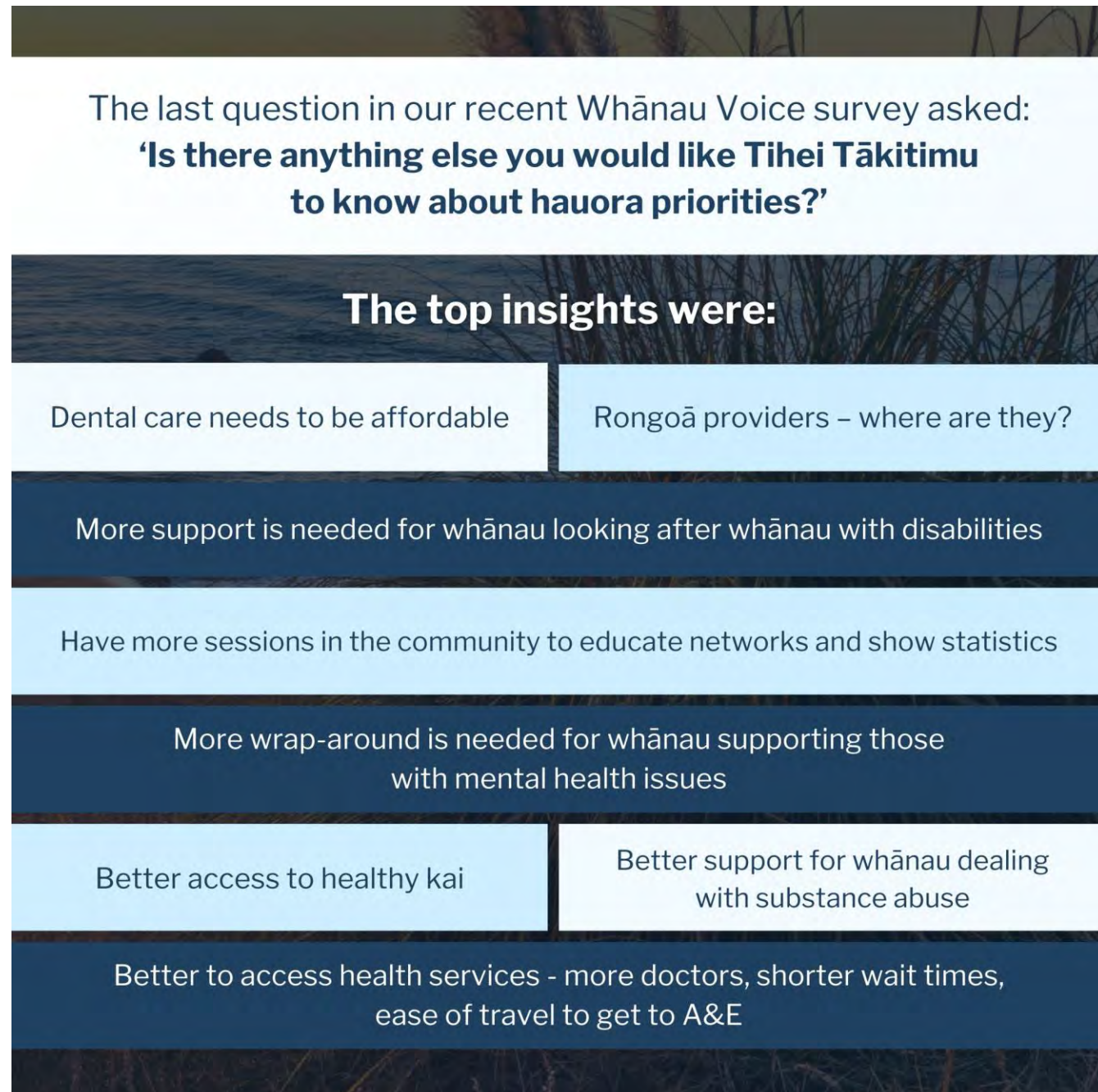
From July 2024 through to August 2024 – online.

Phase 2 | Whānau Voice

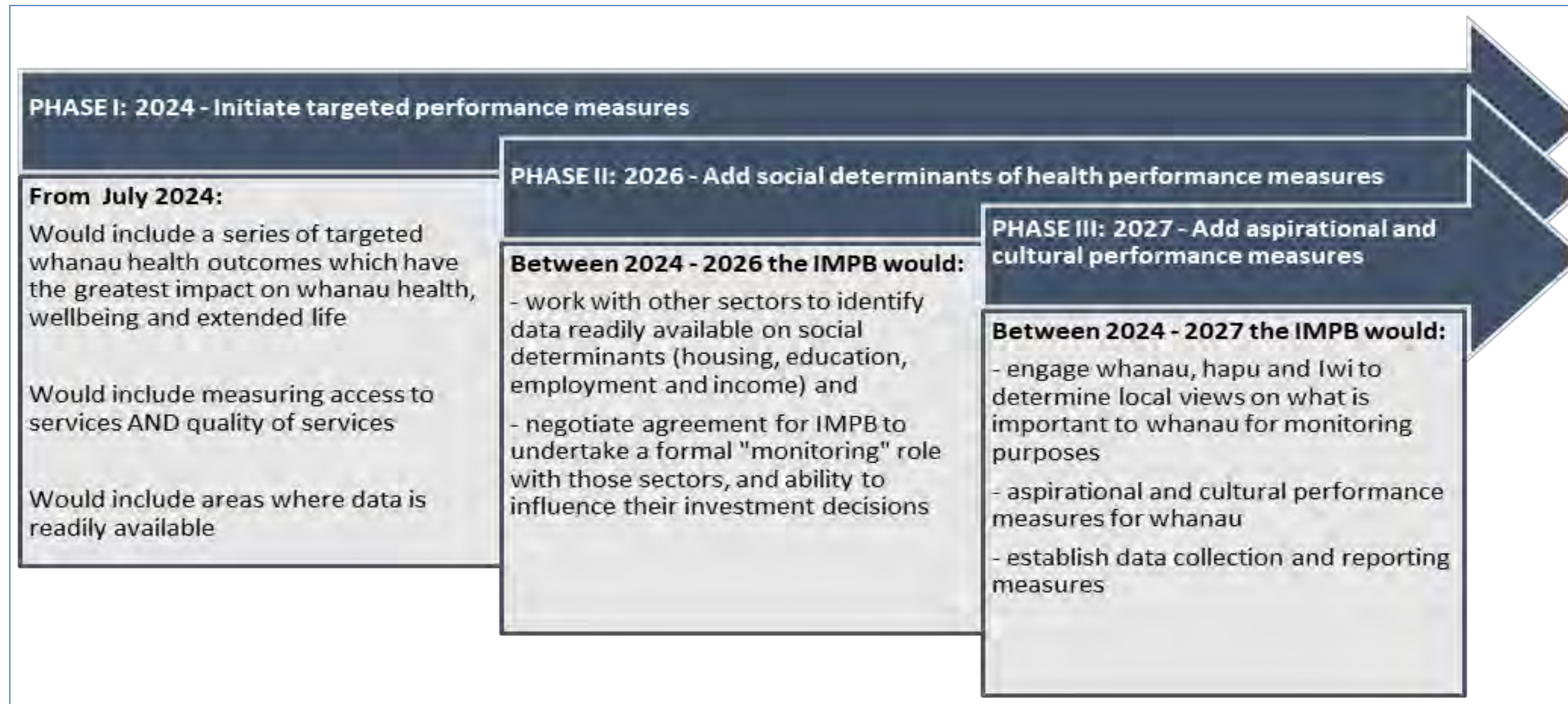
Collaborate and empower

NOW. Close to announcing an Advisory Panel.

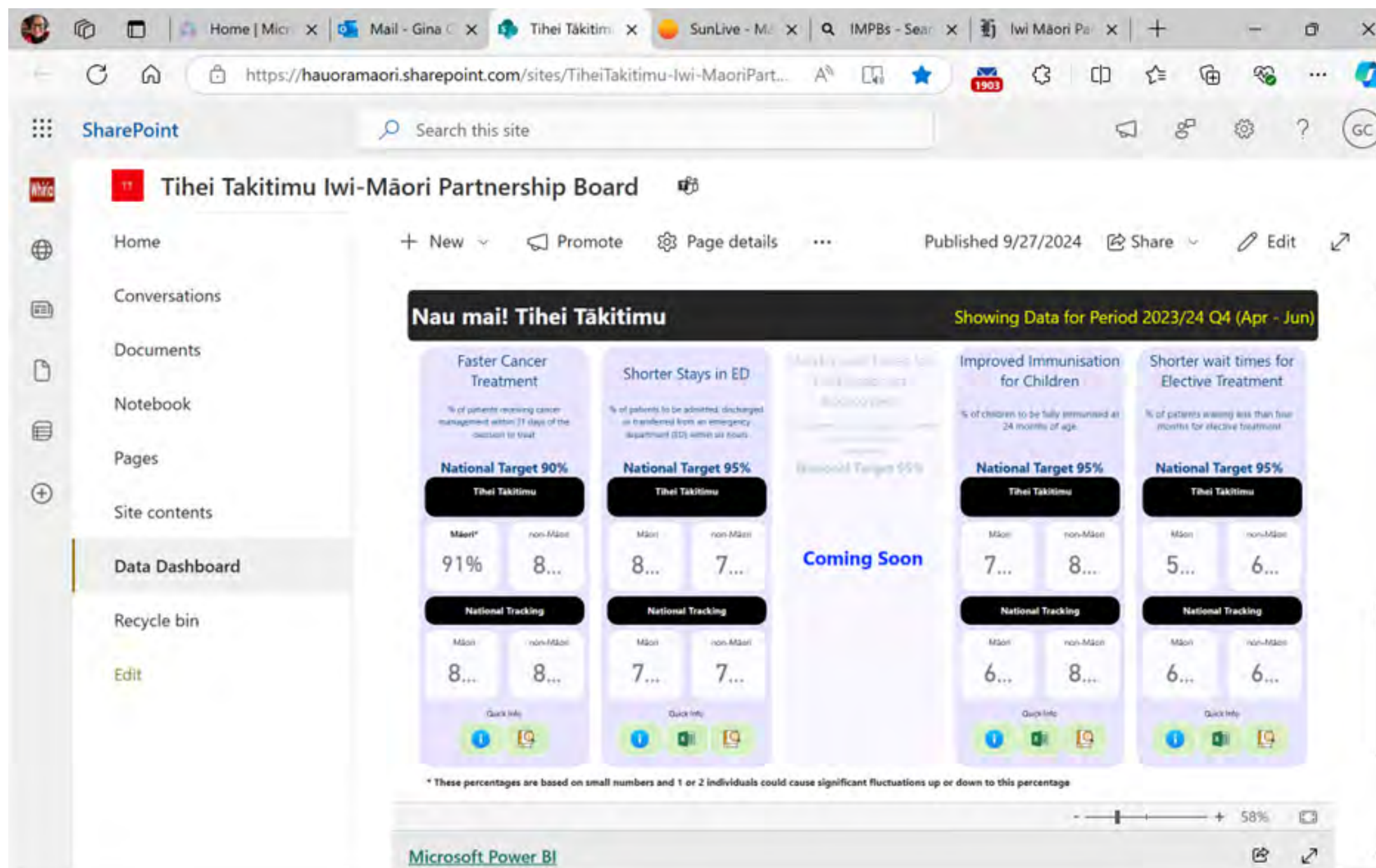
October 2024



PROGRESS – Monitoring



PROGRESS – Monitoring



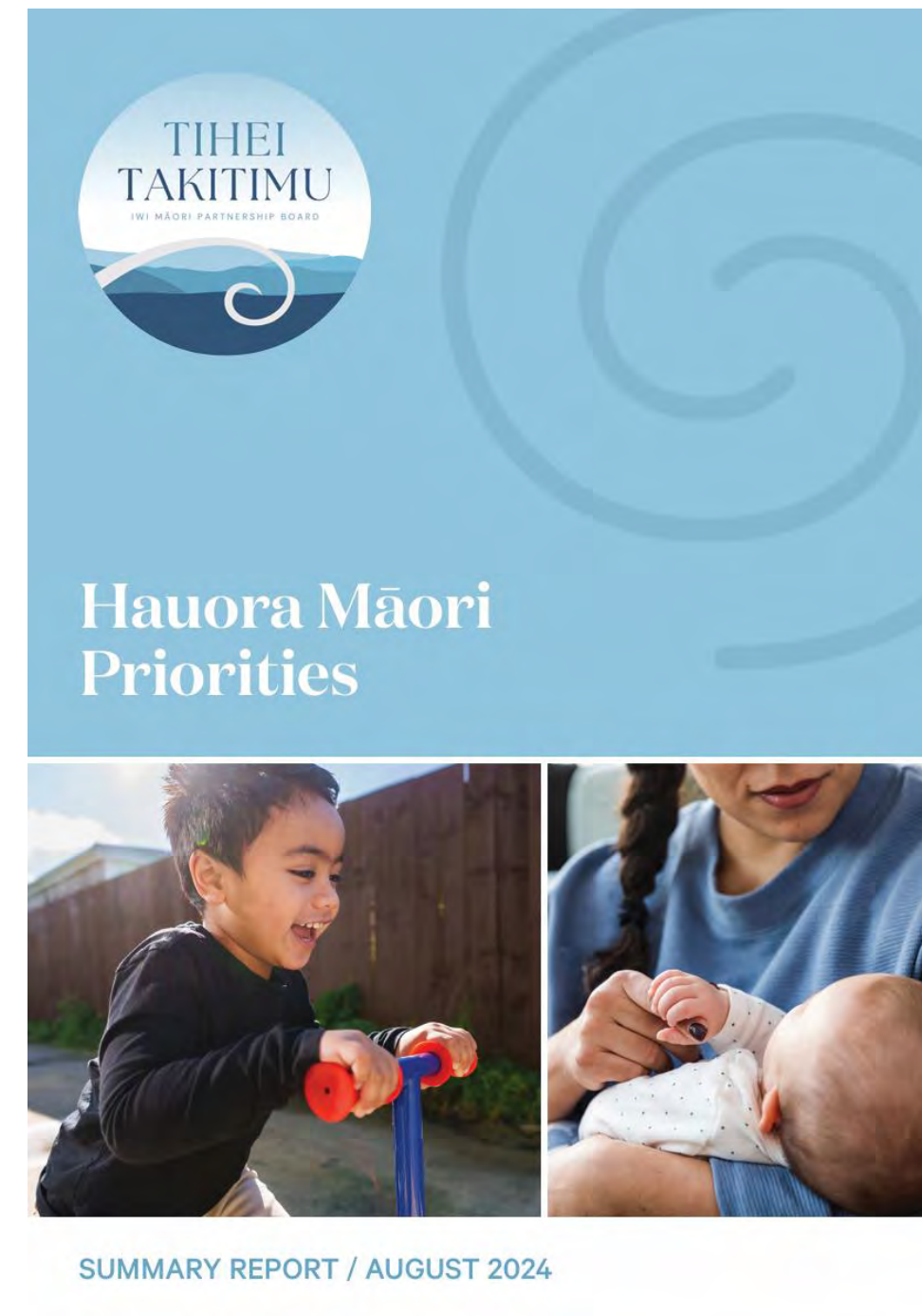
PROGRESS – Hauora Māori Priorities

Combines data and stories from:

- Whānau Voice Phase 1
- Tihei Takitimu IMPB – Health Profile Volume 1
- Whānau Voice Phase 1.5
- Tihei Takitimu IMPB – Health Profile Volume 2
- Locality Plan – Te Wairoa
- Health Hawkes Bay PHO
- Te Whatu Ora

Freely available on our website

<https://ttpb.maori.nz>



| PRIORITIES – Public and population health

- Endorse Governments 5 priorities of “modifiable behaviours” alcohol use, smoking/vaping, diet, exercise and social cohesion
- Breast and cervical screening priority. Need more local Māori designed promotional campaigns. Take screening to workplaces. Offer screening out of hours and weekends. Bring mobile services in
- Health promotion and awareness is a big issue for Māori – needs to be localised, local messages and local delivery across the modifiable behaviours. Need a comprehensive end-to-end health promotion approach over the life-course designed, led and delivered by Māori
- Smoking / Vaping: Need education on dangers of vaping
- Kai sovereignty: return control of food to whānau (teach, grow, preserve good food) – needs Māori campaign.

| PRIORITIES – Primary and community care

- Endorse the Government's pathology priorities for chronic conditions: CVD including stroke, diabetes, respiratory and cancer.
- Access to primary care: Need to make more use of mobile clinics. Need to support GP practices with high numbers of Māori patients especially to offer after hours services, making it sustainable, Doctors are moving to walk-ins model instead of booked appointments so they can see more people and this needs to be supported.
- Long-term conditions: Invest in more cancer support persons / navigators – currently there are not enough of the funded cancer navigators and need more pre-risk screening e.g. checking for hardened arteries before people have heart attacks and strokes, pre-diabetes risk screening.
- Building a sustainable primary care funding and delivery model: Important to have a solution as primary care is a gateway to specialists, prescriptions, NASC, home support and good management of chronic conditions. It is a major issue for both rural and urban communities.

| PRIORITIES – Primary and community care

Pharmacy: Need to raise awareness with whānau around prescriptions to address issues – getting to GP, getting prescription, picking up prescription, actually taking the prescription, stopping when shouldn't, disposing of old prescriptions.

Oral Health: Make use of mobile dental (buses) to reach rural communities across all hāpori (Wairoa, Ahuriri, Heretaunga and Tamatea) • Promotion to whānau and rangatahi of their entitlement to dental under 18 years - whether at school or not.

NASC and Support Services: Must have choice of Māori assessor. InterRai assessment tool needs to include cultural assessment and people trained to use it properly – important as NASC is gateway to home care.

| PRIORITIES – Primary and community care

Mental Health and Addictions: Endorse the Government's priority for mental health

- Need more community-based services especially with changes to police response and withdrawing from supporting mental health cases.
- Need to build resilience in Rangatahi to cope with stress and strain, trauma otherwise succumb to drugs, gangs, suicide, etc. Support a restorative approach

Rongoā Māori: Need to expand Rongoā Māori offerings across the region

- ACC providers (14 identified in the region) – it is unclear who is endorsing them from a manawhenua perspective to ensure they are upholding local tikanga

| PRIORITIES – Hospital and specialist services

- Endorsed Government's priorities of Health Targets: faster cancer treatment, shorter wait times for FSAs and shorter wait times for Planned Care – adding that there needs to be an equity focus to ensure “everyone” including Māori is benefitting equally from these efforts
- Te Whatu Ora to provide more detailed information, on Did Not Attends (DNAs) for specialist outpatients and specialist mental health admissions – so that barriers to attending appointments can be determined with whānau

PROGRESS – Community Health Plan

Determines whether we meet the criteria for joining the first tranche of Strategic Commissioners, commencing January 2025.

Combines mātauranga from:

- Tihei Takitimu Strategic Plan 2023 - 2026
- POWER-UP Programme Plan
- Whānau Voice
- Monitoring Framework
- Hauora Māori Priorities Report

IN DRAFT, awaiting FEEDBACK from Te Whatu Ora.



SEPTEMBER 2024

| ON THE RADAR – Treasury Bid

Collaborating as a group of 6 IMPBs to seek new money in the funding period 1 July 2025 – 30 June 2030 for shared priorities in:

- Oral Health | to address gaps and poor dental outcomes for tamariki and rangatahi Māori as well as high needs pākeke
- Kahu Taurima (first 2000 days) | building on the current initial investment and expanding current services to extend reach especially into rural communities, and preparing for future population growth
- Workforce Development | boosting workforce investment to cater for Māori population growth

NEXT STEPS

- Announce/introduce Advisory Panel to enable collaboration and empowerment
- Review feedback on the Community Health Plan from Te Whatu Ora
- Ensure our priorities are captured in Regional Health and Wellbeing Plans
- Continue to grow capability in the areas of commissioning, social investment, insights and intelligence.
- Publish DASHBOARDS to encourage awareness and involvement in tracking the performance of the Health System.



TIHEI TĀKITIMU

IWI MĀORI PARTNERSHIP BOARD

PĀTAI / QUESTIONS

Kerri Nuku | Co-Chair

nukuz@xtra.co.nz

Lewis Ratapu | Co-Chair

lewis.ratapu@ttpb.maori.nz

www.ttpb.maori.nz