

TIHEI TĀKITIMU

IWI MĀORI PARTNERSHIP BOARD

PROGRESS REPORT – MARCH 2024

AGENDA



01. RECAP



02. PROGRESS



03. WHĀNAU VOICE



04. STRATEGIC RESET



05. PĀTAI

RECAP

- Our achievements
- On the radar
- Next steps

PROGRESS

- Shared Health Profile - Volume 1
- Completed Whānau Voice - Phase 1
- Resetting the Strategic Agenda

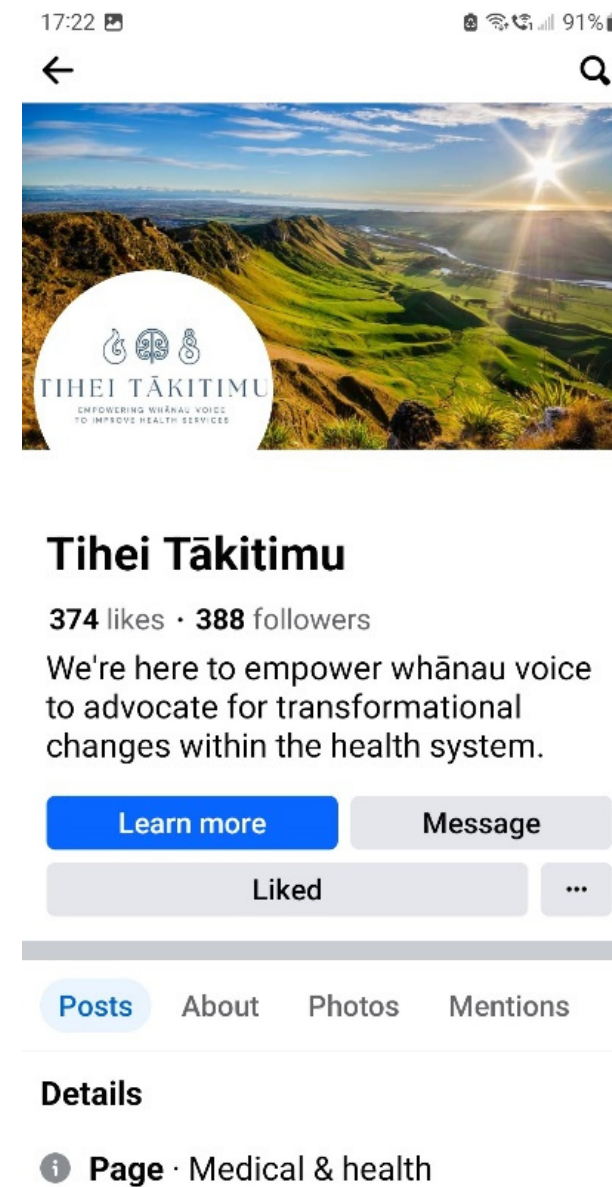


WHĀNAU VOICE

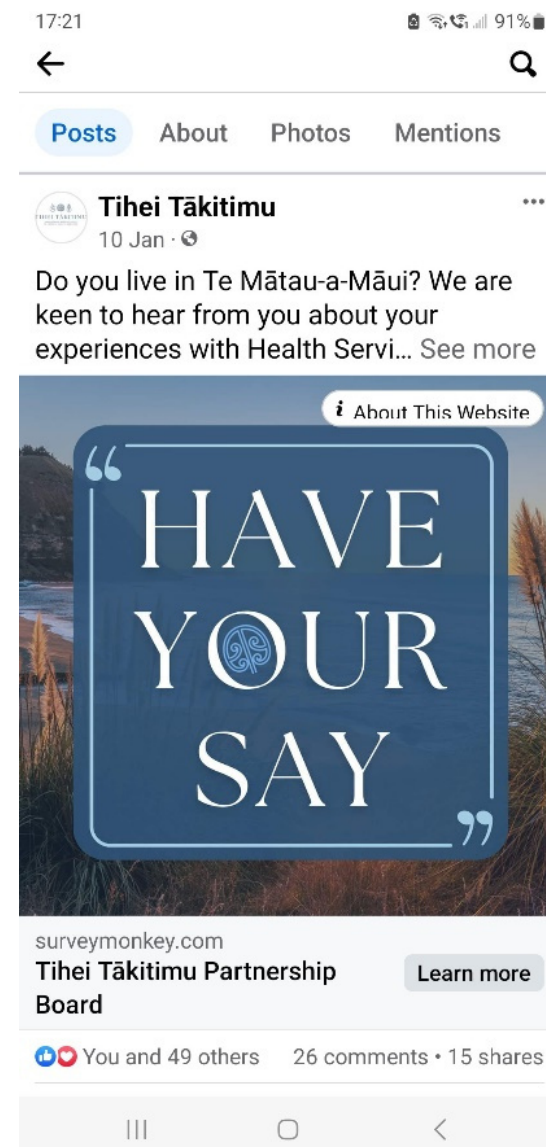
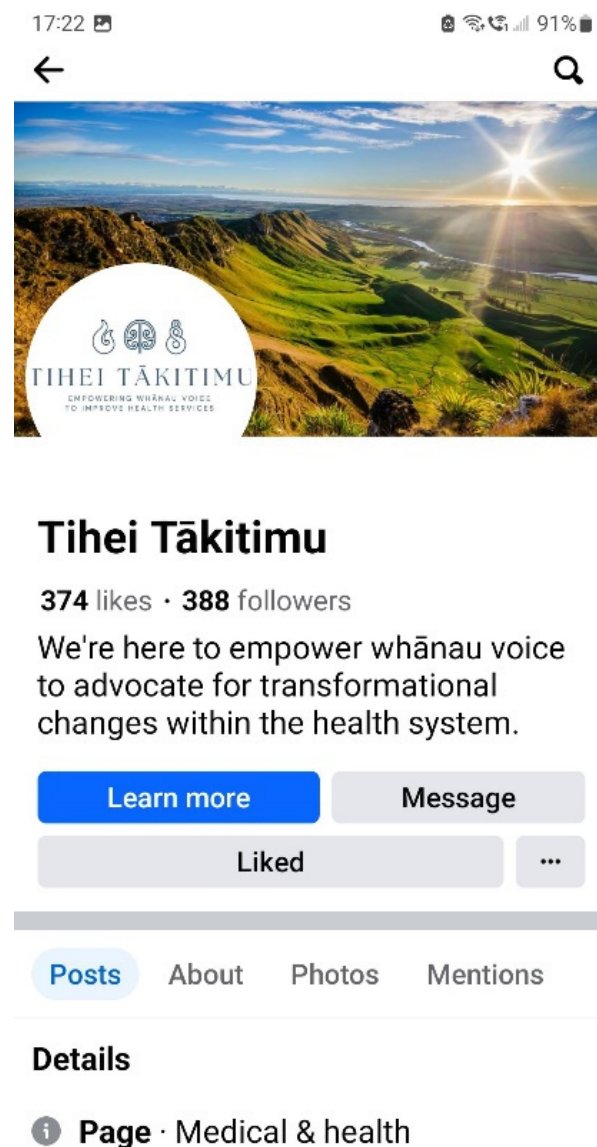
PHASE 1

We asked about:

- Current health status
- Health concerns
- Health access
- Health priorities



THE RESULTS



WHAT WHĀNAU SAY

“Te Whatu Ora online Suicide program purchased from a New York provider without consultation is **culturally inappropriate** for our local tribe having the highest suicide rates in NZ and being the 3rd highest suicide rates in the world.”

WHAT WHĀNAU SAY

“**Lack of services** for the Wairoa community, ongoing transport issues with roading (due to flooding) therefore, opportunities for travel to specialist appointments are jepodised [sp] i.e cancelled or rescheduled when required. Ability of paitients [sp] to travel either due to health or age.”

WHAT WHĀNAU SAY

“There are no Māori or Pasifika GPs in the Hawkes Bay.
If there are, where are they? **I want access to them.**”

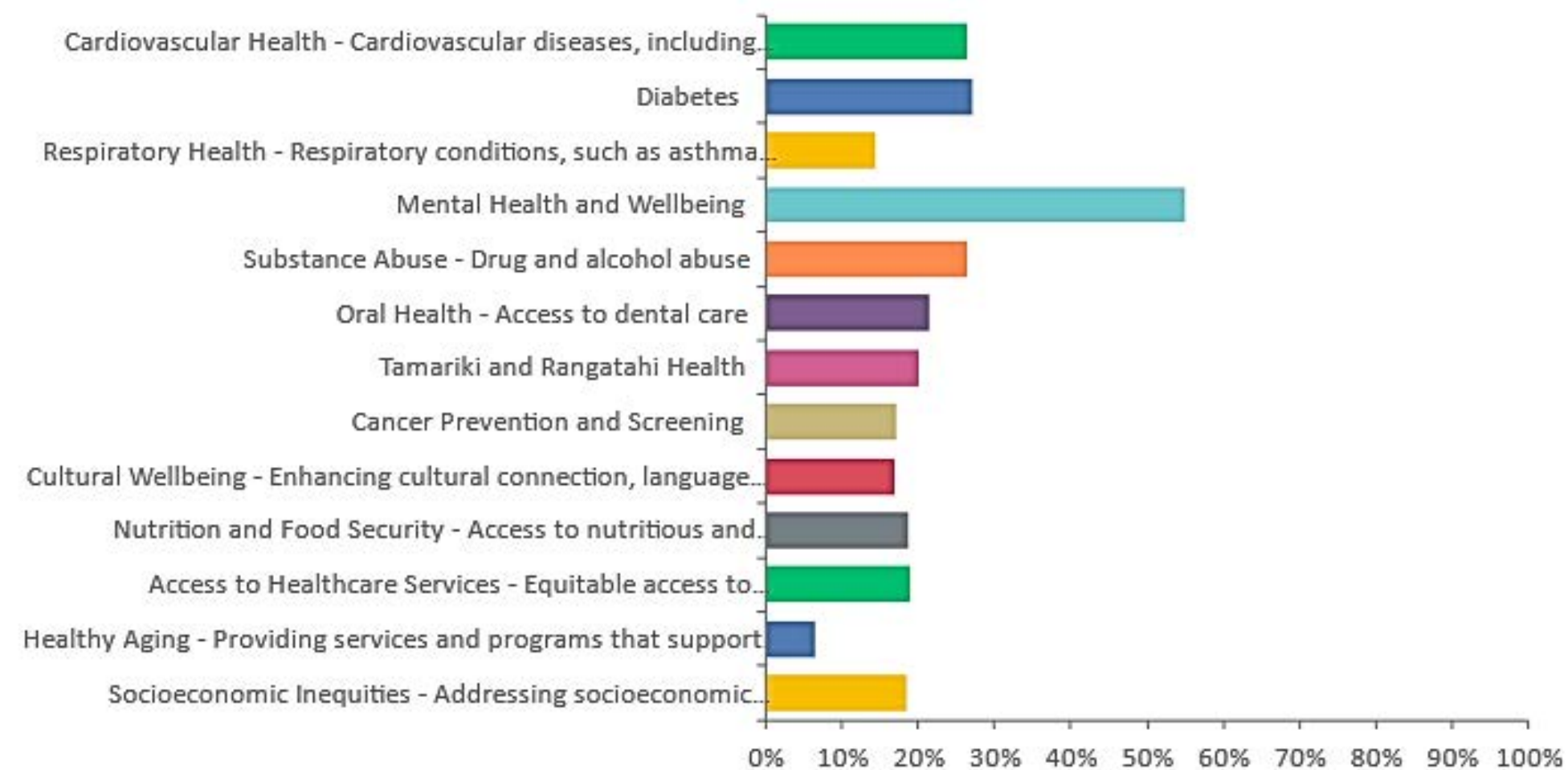
WHAT WHĀNAU SAY

“Mental Health and Wellbeing is huge especially in this rohe, and especially after the cyclone. We lost so many to Suicide that **could have been prevented**. This needs a huge focus with the right people leading. (Those on the ground are the right people not the CEOs behind the desks).”

WHAT WHĀNAU SAY

Q5: What do you think should be the top 3 priorities to improve Māori health in Hawke's Bay? (tick your top 3 only)

Answered: 737 Skipped: 21



WHAT WHĀNAU SAY

Q6. Which one service do wish you could have immediate access to when you or your whānau need it?

- Dental care
- Mental health and wellbeing
- Access to healthcare
- Substance abuse – access to help
- Nutrition and food security

STRATEGIC RESET

CONTEXT | COMMISSIONING, MONITORING, LOCALITY PLANNING

“I want to see IMPBs with the ability to have **commissioning** authority. I will empower local health decisions and Māori health providers with more autonomy than they have had for some years.”

“In the future, IMPBs will be facilitated to do more including playing an important role in **monitoring** how well health care and services are working at the local level in support of better outcomes for whānau and communities.”

“I have instructed Health New Zealand to pause current **locality planning** while I reconsider the best mechanisms to shift decision-making and resources closer to communities.”

– Hon Dr Shane Reti – Speech at the National IMPB Hui – Christchurch – 6 March 2024

STRATEGIC RESET

CONTEXT | MĀORI HEALTH PROVIDER CONTRACTS

“Currently there are two sorts of Māori Health provider contracts. Most are legacy and a smaller number are budget 22 contracts.

To ensure continuity to the Hauora Māori provider network, I have needed to make a decision to roll over existing contracts for a 1-year period.

Both legacy and budget 22 contracts up for renewal this year will be extended for 1-year. In the next financial year, **I expect IMPBs to continue to prepare for readiness**, toward the financial year 2025/26 when local decision making will be available, however, decisions for IMPB funded commissioning that starts on 1 July 2025 will need to be ready by January 2025 ...”

– Hon Dr Shane Reti – Speech at the National IMPB Hui – Christchurch – 6 March 2024

STRATEGIC RESET

CONTEXT | SOCIAL INVESTMENT

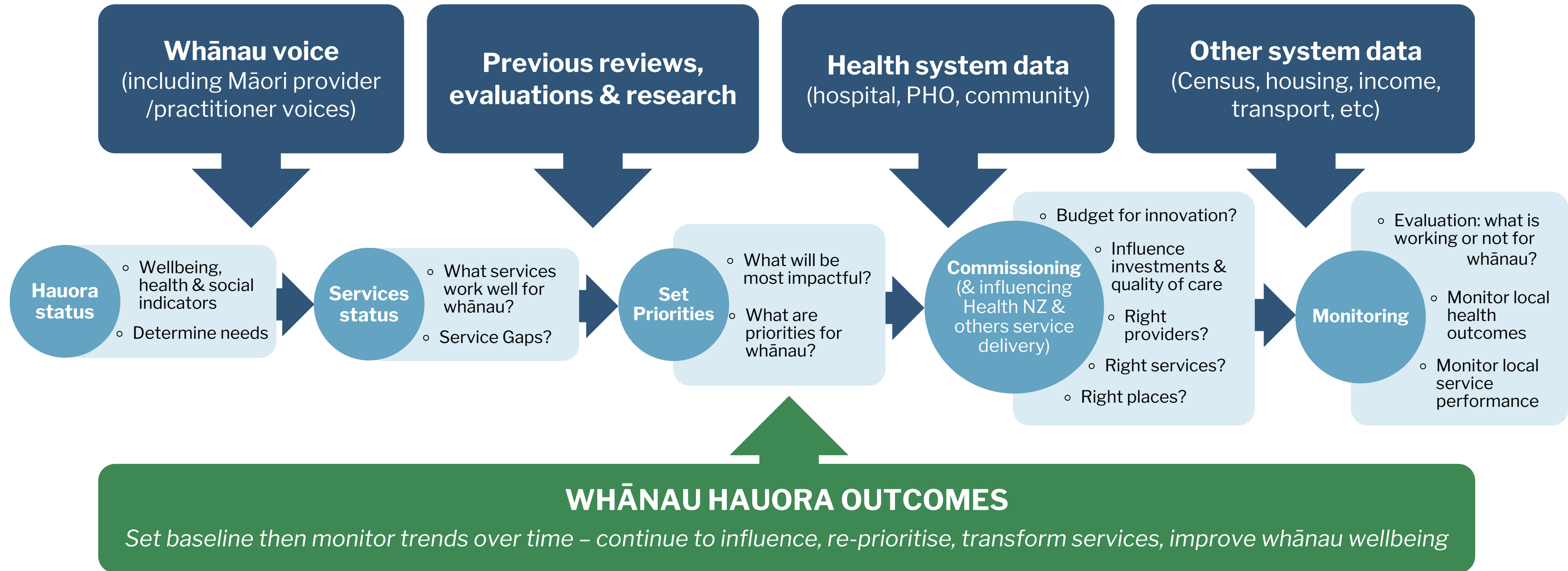
“I will be creating an overlay across community health providers that generally includes IMPBs, GPs, Pharmacy, Radiology, Allied Health, Housing, Employment, Social Services and others.

That overlay will be a **social investment overlay where, with new money, providers will be asked to collaborate across the silos to bid proposals with new money**, not BAU, towards priorities such as targets that I have identified. This is an exciting social investment layer with room for new unthought of innovation.”

– Hon Dr Shane Reti – Speech at the National IMPB Hui – Christchurch – 6 March 2024

OUR RESPONSE

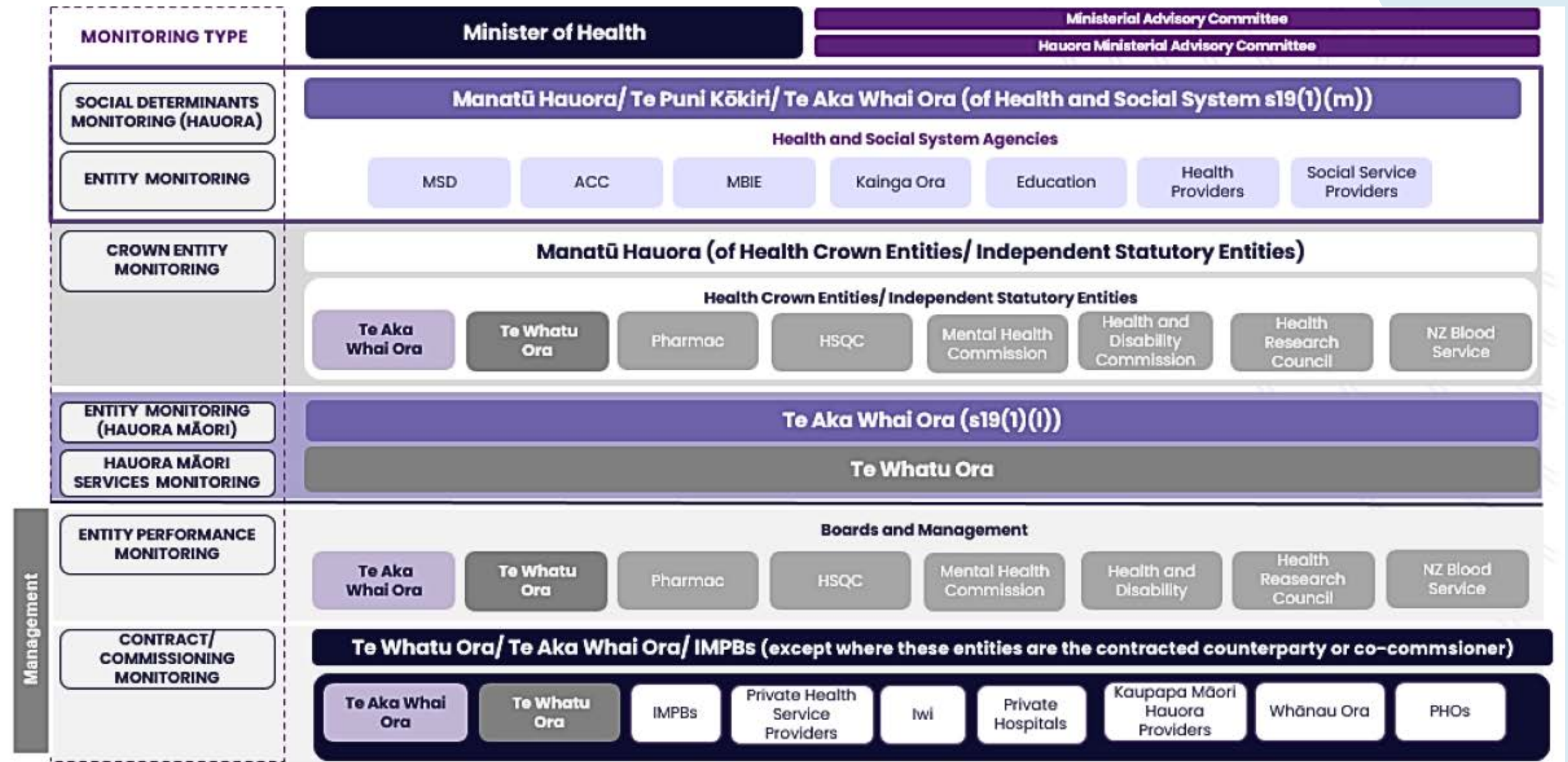
NEEDS ANALYSIS



OUR RESPONSE

MONITORING

This diagram shows that monitoring occurs at multiple layers across the health system, with varying approaches to monitoring required depending on whether that monitoring is occurring at a system, entity (service and programme) or local level.



TIHEI TĀKITIMU

IWI MĀORI PARTNERSHIP BOARD

PĀTAI / QUESTIONS

Kerri Nuku | Co-Chair

nukuz@xtra.co.nz

Lewis Ratapu | Co-Chair

lewis.ratapu@ttpb.maori.nz

www.ttpb.maori.nz